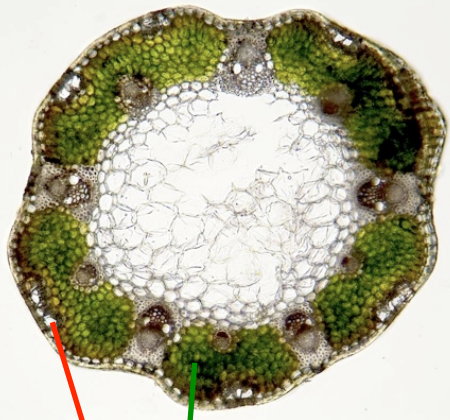
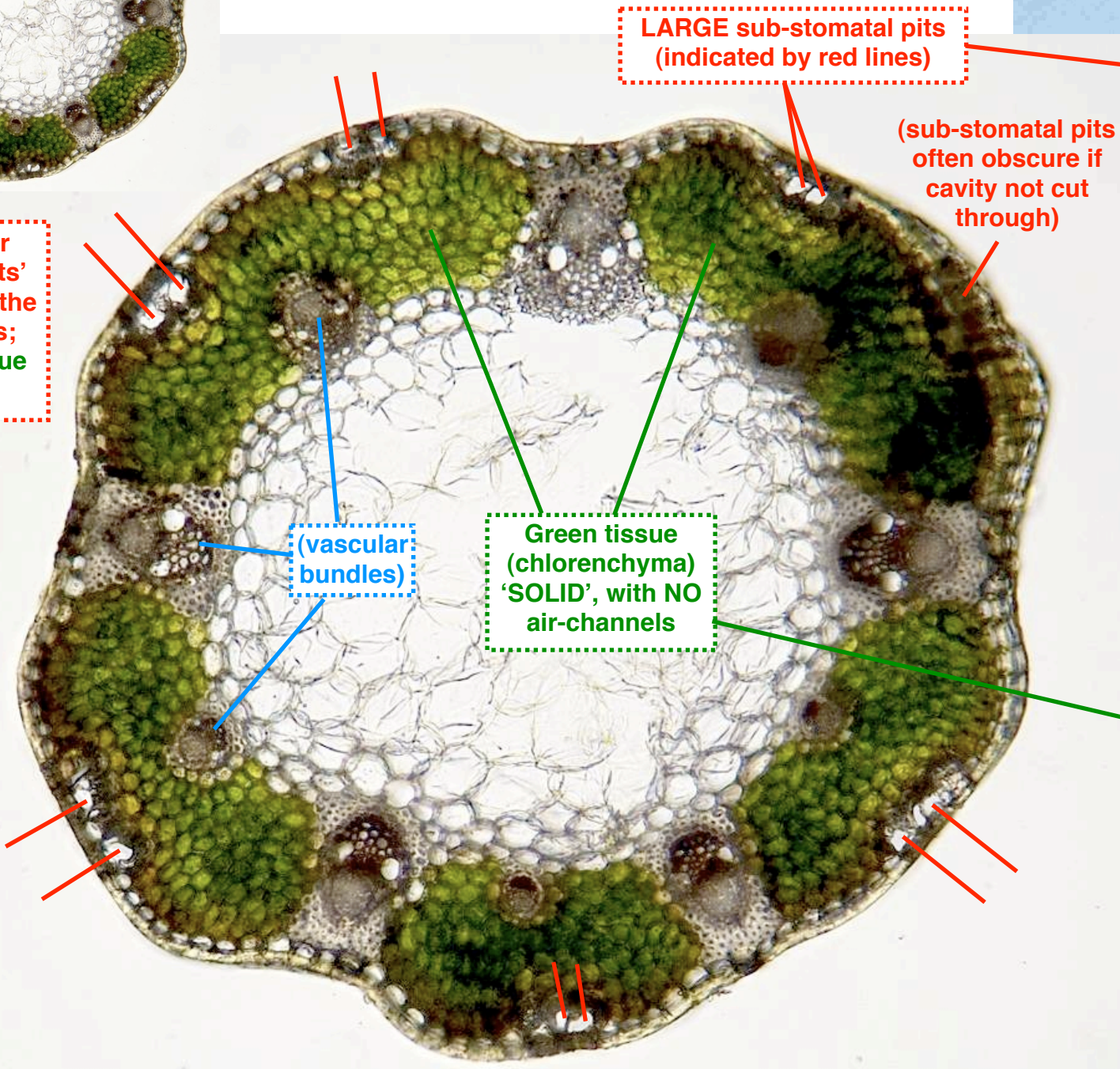


Northern Deergrass *Trichophorum cespitosum sensu stricto*



Single, or paired, 'pits' just below the epidermis; green tissue 'solid'



LARGE sub-stomatal pits (indicated by red lines)

(sub-stomatal pits often obscure if cavity not cut through)

(vascular bundles)

Green tissue (chlorenchyma) 'SOLID', with NO air-channels

Sub-stomatal pits to \*25 µm\* deep (i.e. radially), with lining of colour-less cells

Stoma