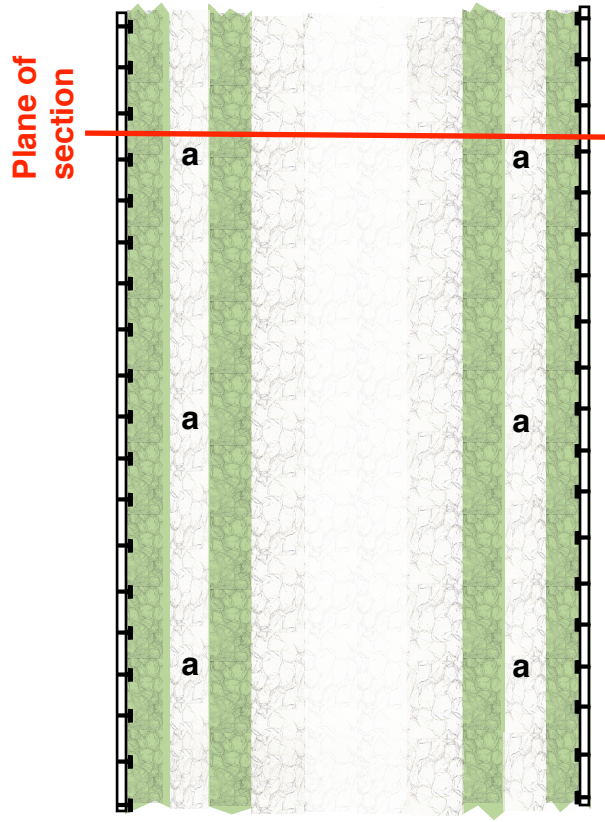
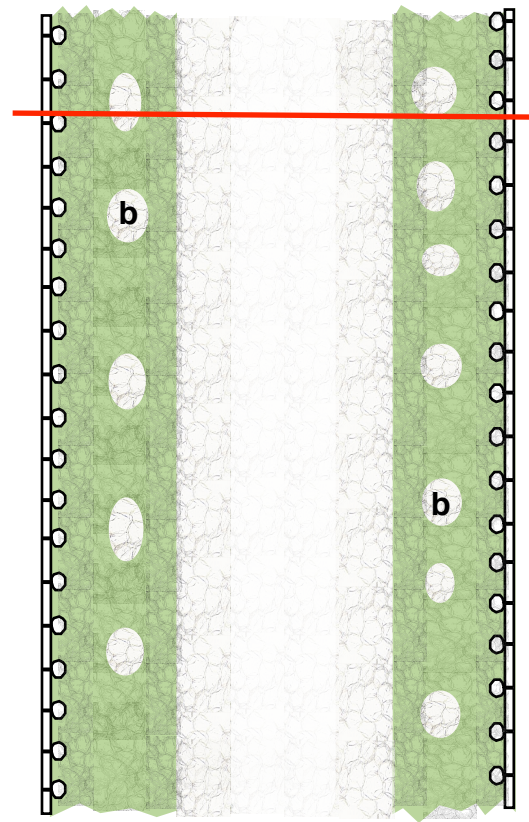


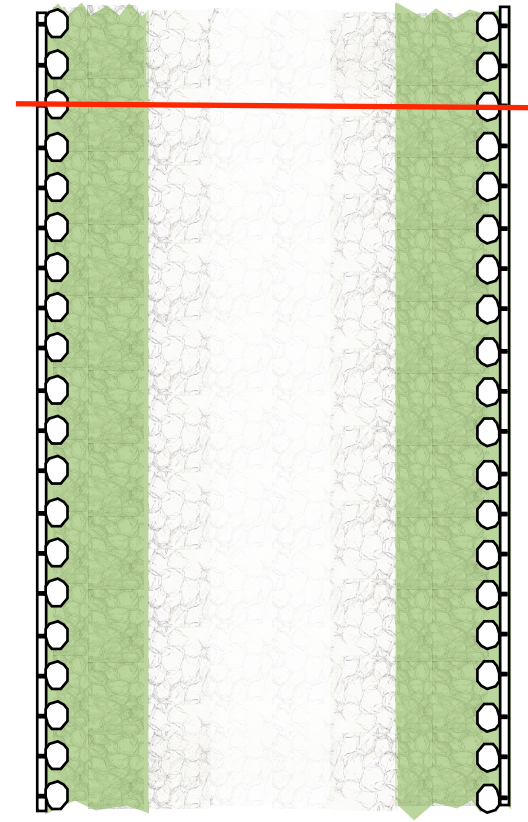
Vertical sections (diagrammatic) through stems of *Trichophorum germanicum* (left); *T. ×foersteri* (centre); *T. cespitosum* (right)



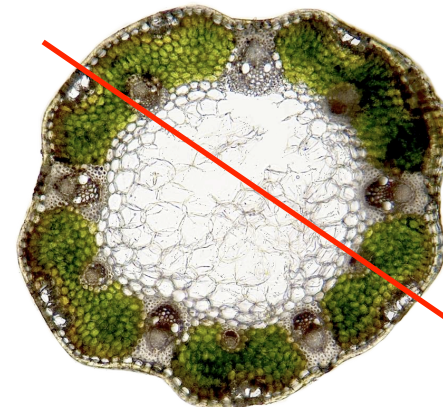
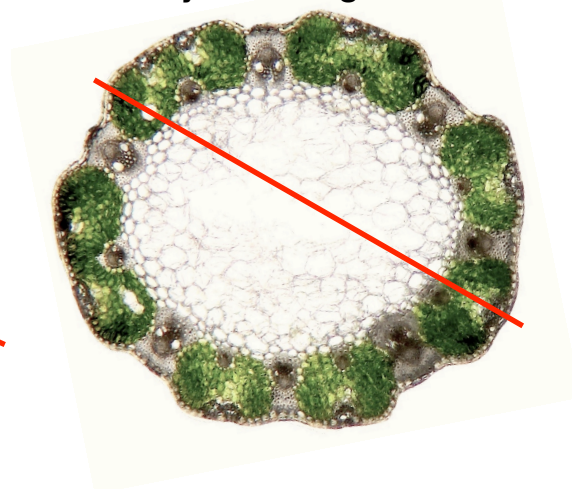
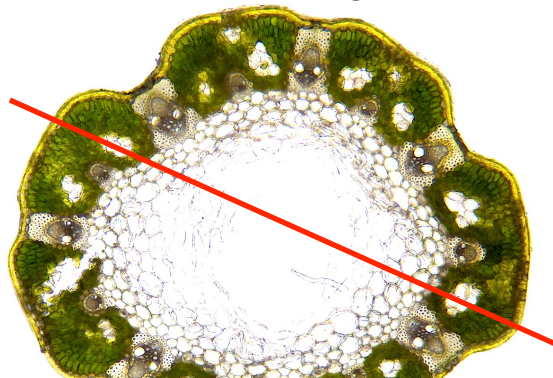
**T. germanicum**  
Common Deergrass



**T. ×foersteri**  
Hybrid Deergrass



**T. cespitosum s.s.**  
Northern Deergrass



**In *T. germanicum*:**

**a** = aerenchyma within chlorenchyma in continuous channels; sub-stomatal pits minute

**In *T. ×foersteri*:**

**b** = aerenchyma within chlorenchyma in discontinuous irregular "islands" of clear cells; **note** how the **apparent** size of aerenchyma clear "islands" depends upon where the section cuts through them sub-stomatal pits medium

**In *T. cespitosum*:**

**no** aerenchyma within chlorenchyma; sub-stomatal pits